

SEC. 29, PT-S/2, NW, TN.1N RG.8E

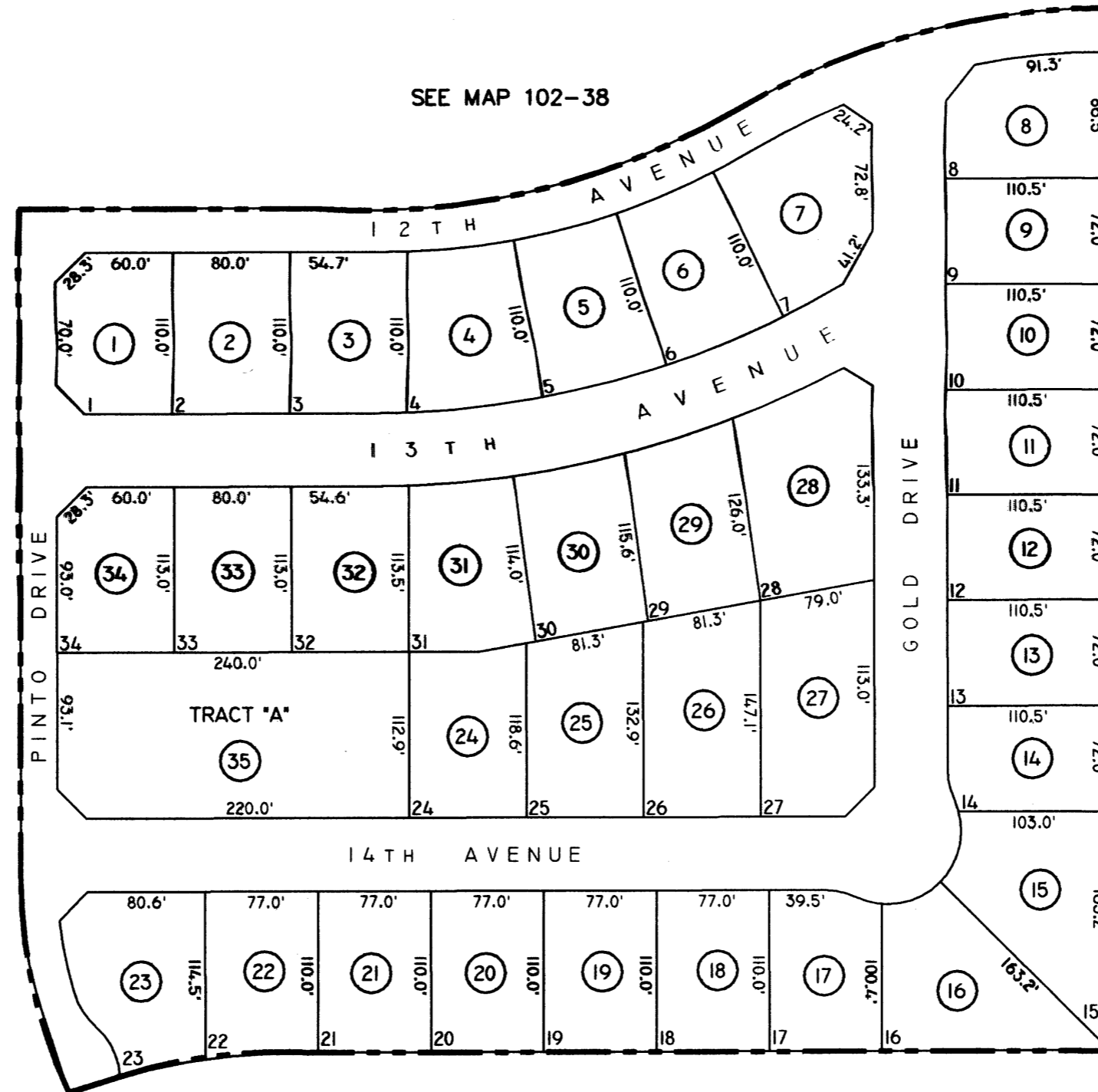
102-54

IRONWOOD COVE-UNIT 2

CAB.C - SLD.33

THE ORIGINAL PLAT OF THIS SUBDIVISION IS ON FILE WITH THE PINAL COUNTY RECORDERS OFFICE, FOR COMPLETE INFORMATION OF PLAT AND C&A'S CALL (520) 968-7100.

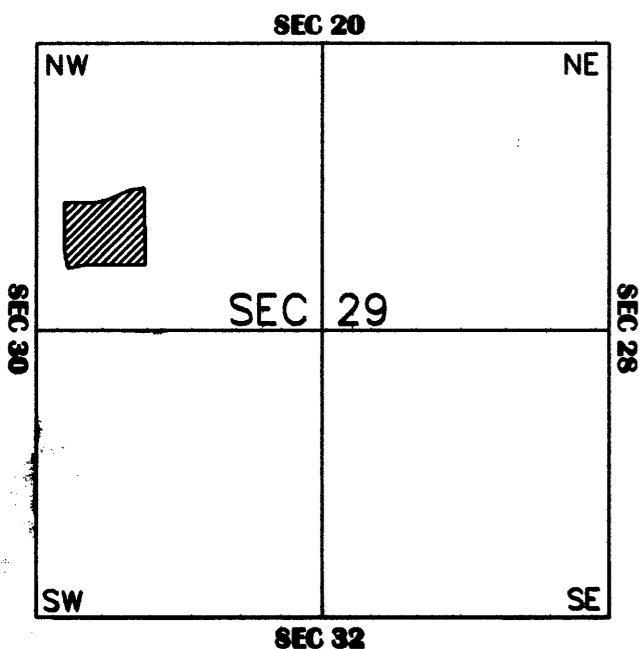
THIS MAP IS FOR TAX PURPOSES ONLY. THIS OFFICE WILL NOT ASSUME LIABILITY FOR REPRESENTATION, MEASUREMENTS OR ACREAGE.



SEE MAP 102-29

SEE MAP 102-48

VICINITY MAP



SEE MAP 102-48

SCALE: 1" = 100'

3-01-2001

PINAL COUNTY ASSESSORS MAP