

SEC. 28, PT-E/2, TN.1N RG.8E



SCALE: 1" = 150'

1-25-2001

102-03
3/3

PALM SPRINGS, UNIT 3

BK.08 - PG.33

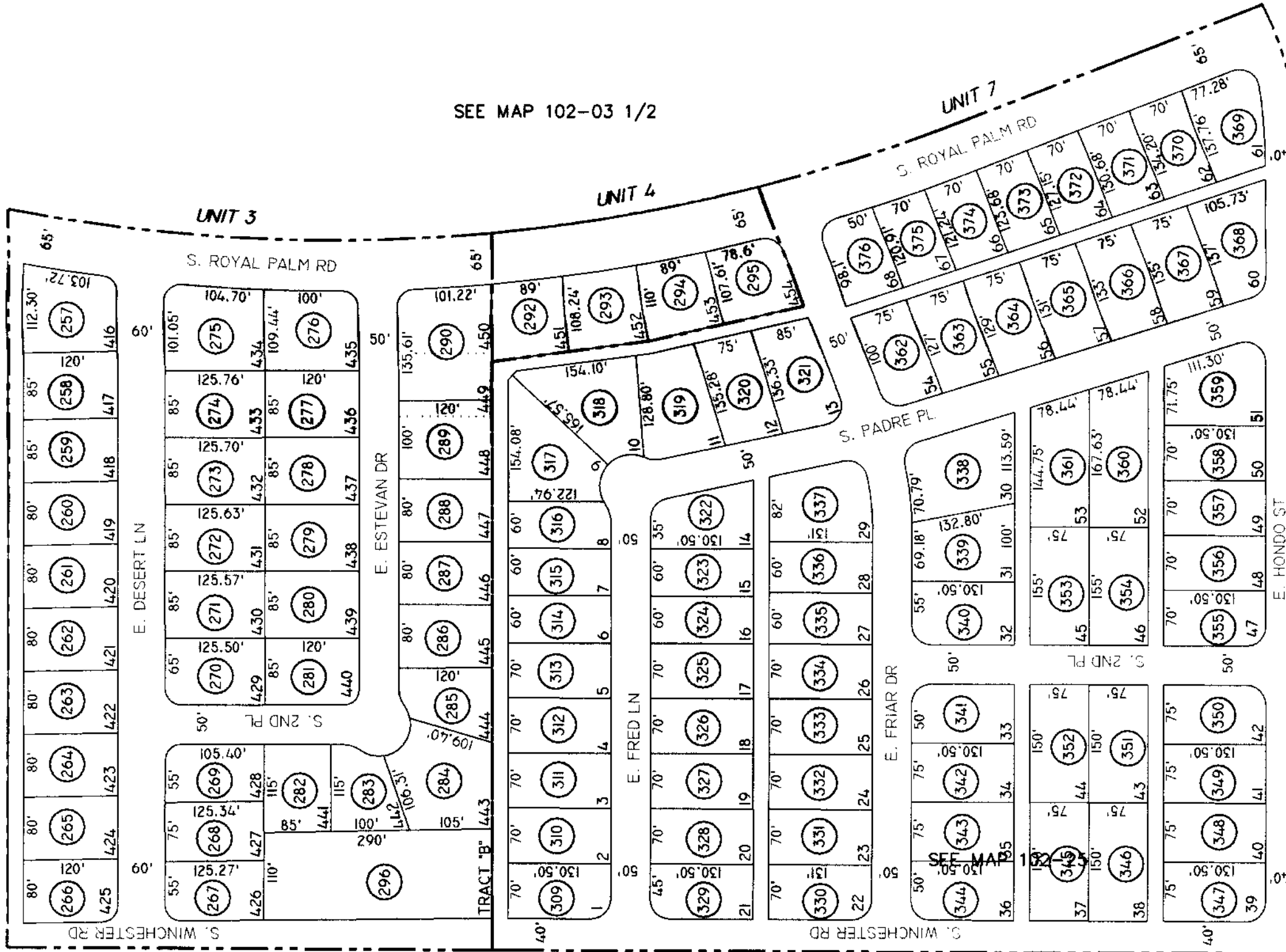
PALM SPRINGS, UNIT 4

BK.09 - PG.38

PALM SPRINGS, UNIT 7

BK.13 - PG.51

SEE MAP 102-03 1/2



SEE MAP 102-04

THE ORIGINAL PLAT OF THIS SUBDIVISION IS ON FILE WITH THE PINAL COUNTY RECORDERS OFFICE, FOR COMPLETE INFORMATION OF PLAT AND CC&R's CALL (520) 868-7100.

THIS MAP IS FOR TAX PURPOSES ONLY.

THIS OFFICE WILL NOT ASSUME LIABILITY FOR REPRESENTATION, MEASUREMENTS OR ACREAGE.

SEE MAP 102-26

VICINITY MAP

