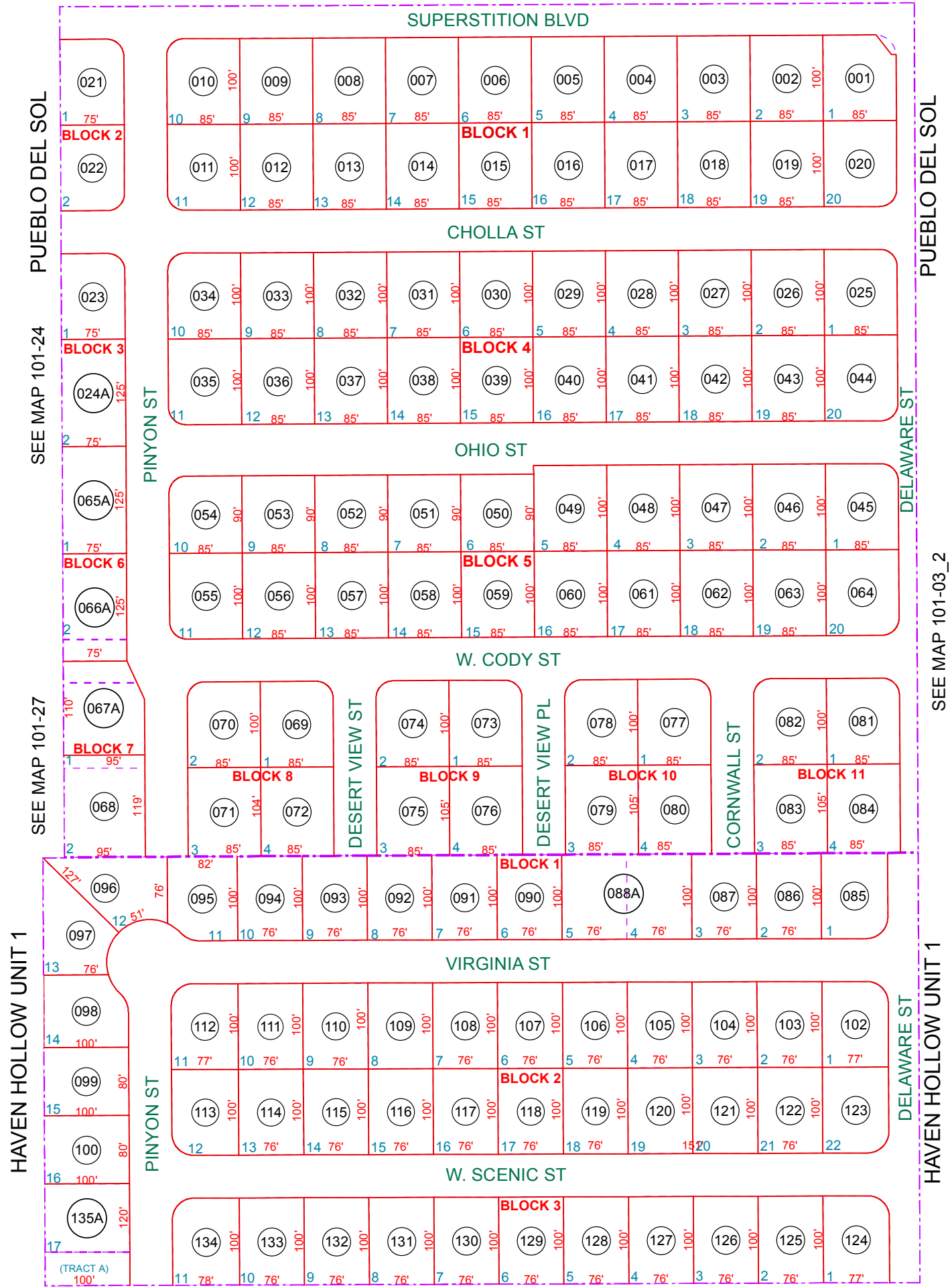


SEE MAP 100-40



SEE MAP 101-25

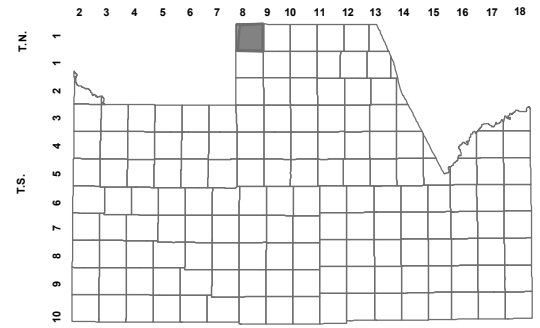
BOOK - MAP

101-05_1

NE, NW SEC. 19 T.01N. R.08E.

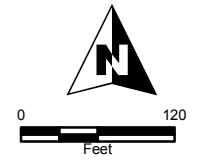
PUEBLO DEL SOL
 BOOK 9 OF MAPS - PAGE 4
 STREET ABANDONMENTS:
 SEE DOCKET 1301 - PGS 65-68

HAVEN HOLLOW UNIT 1
 BOOK 10 OF MAPS - PAGE 39
 LOCATION MAPS
 R.E.



MARICOPA COUNTY

TOWNSHIP					
6	5	4	3	2	1
IDAHO RD		MCKELLIPS RD			
7	8	9	10	11	12
LOST DUTCHMAN BLVD		GOLDFIELD RD			
18	17	16	15	14	13
SUPERSTITION BLVD		MOUNTAIN VIEW RD			
19	20	21	22	23	24
IRONWOOD DR		TOMAHAWK RD		SOUTHERN AVE	
30	29	28	27	26	25
31	32	33	34	35	36
SECTION BASELINE RD					



Revised: 11/14/2012

By: YL



PINAL COUNTY
wide open opportunity

Pinal County Assessor

THIS MAP DOES NOT REPRESENT A SURVEY. NO LIABILITY IS ASSUMED FOR THE ACCURACY OF THE DATA DELINEATED HEREIN, EITHER EXPRESSED OR IMPLIED BY PINAL COUNTY OR ITS EMPLOYEES. THIS MAP IS COMPILED FROM OFFICIAL RECORDS, INCLUDING PLATS, SURVEYS, RECORDED DEEDS AND CONTRACTS, AND ONLY CONTAINS INFORMATION REQUIRED FOR THE PINAL COUNTY ASSESSOR'S OFFICE PURPOSES.