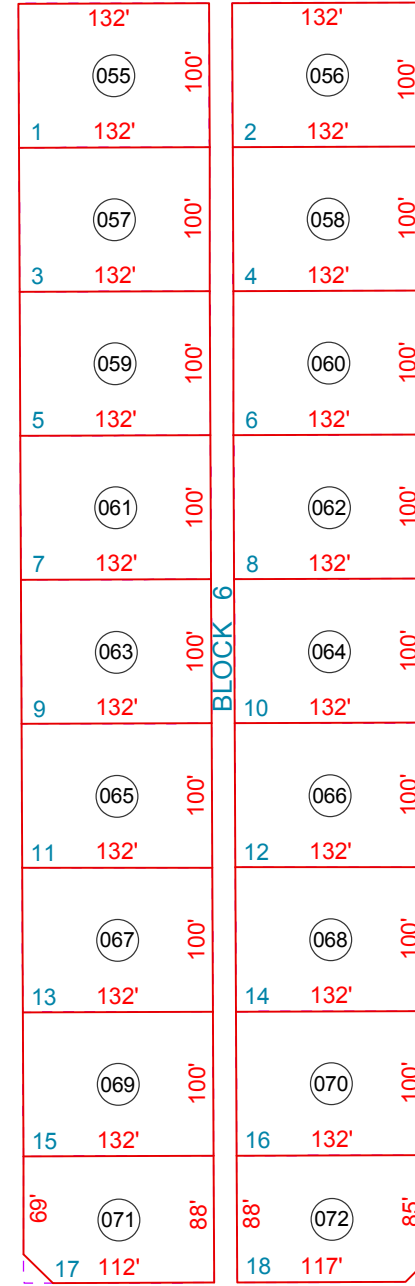
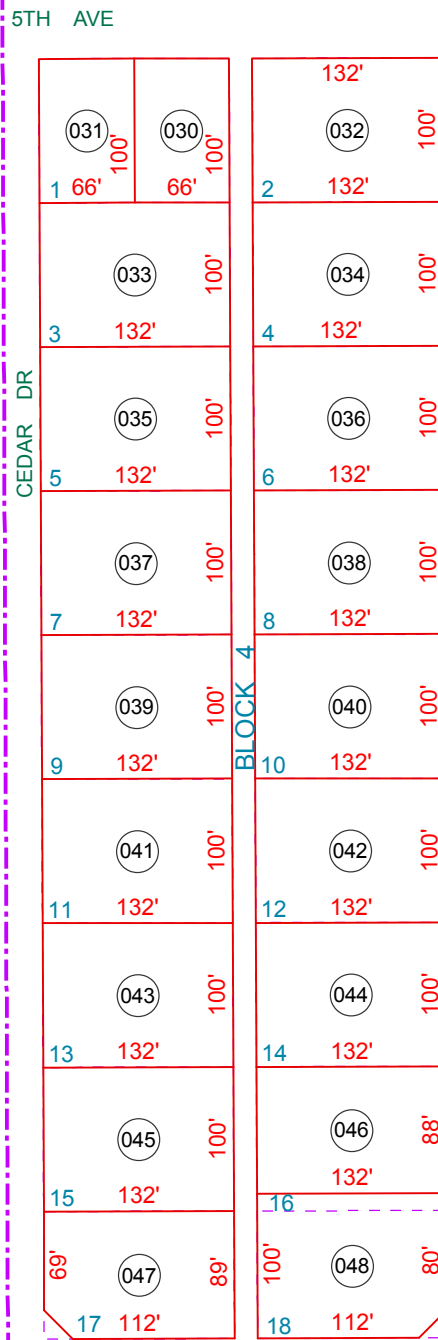
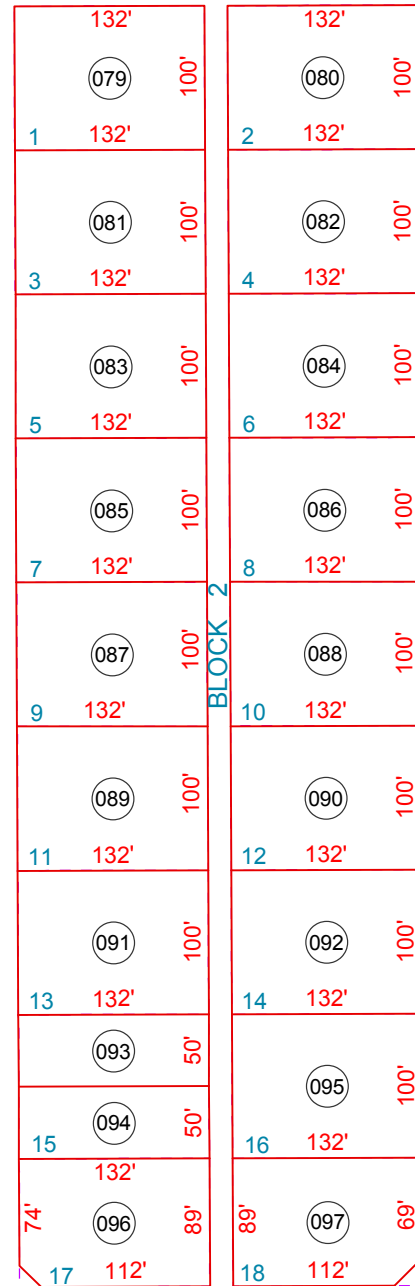
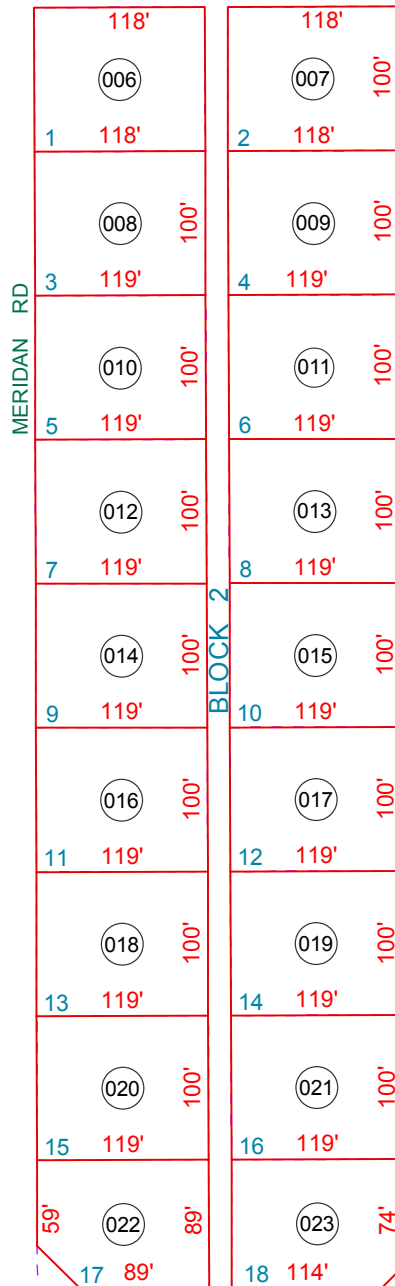
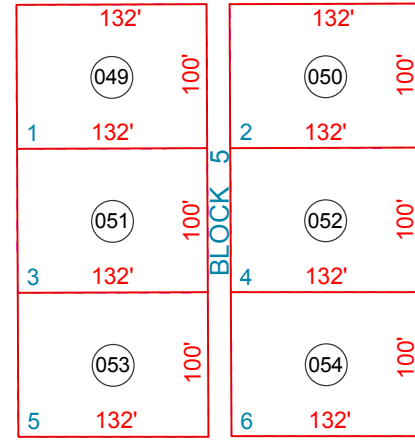
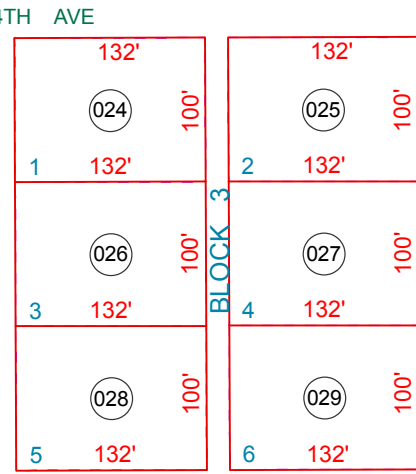
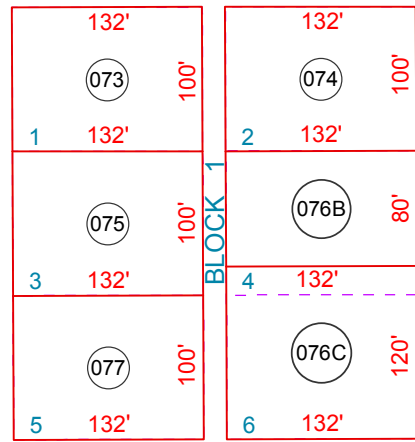
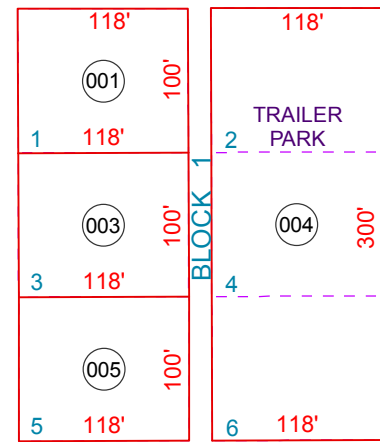


MARICOPA COUNTY

SEE MAP 101-06



SMYTHE'S COUNTY LINE SUBDIVISION

MC ILWAIN ADDITION

BROADWAY AVE

SMYTHE'S COUNTY LINE SUBDIVISION

SEE MAP 102-33

SEE MAP 101-07

BOOK - MAP

101-08

SW SW SEC. 19 T.01N. R.08E.

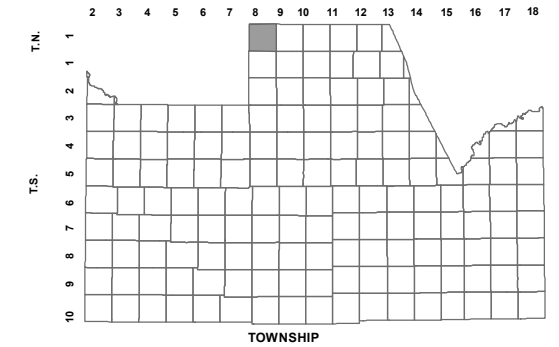
SMYTHE'S COUNTY LINE SUBDIVISION:

BOOK 8 - PAGE 13

MC ILWAIN ADDITION:

BOOK 8 - PAGE 12

LOCATION MAPS
R.E.



6	5	4	3	2	1
7	8	9	10	11	12
18	17	16	15	14	13
19	20	21	22	23	24
30	29	28	27	26	25
31	32	33	34	35	36

SECTION



Revised: 2/29/2012

By: AHB



PINAL COUNTY
wide open opportunity

Pinal County Assessor

THIS MAP DOES NOT REPRESENT A SURVEY. NO LIABILITY IS ASSUMED FOR THE ACCURACY OF THE DATA DELINEATED HEREIN, EITHER EXPRESSED OR IMPLIED BY PINAL COUNTY OR ITS EMPLOYEES. THIS MAP IS COMPILED FROM OFFICIAL RECORDS, INCLUDING PLATS, SURVEYS, RECORDED DEEDS AND CONTRACTS, AND ONLY CONTAINS INFORMATION REQUIRED FOR THE PINAL COUNTY ASSESSOR'S OFFICE PURPOSES.