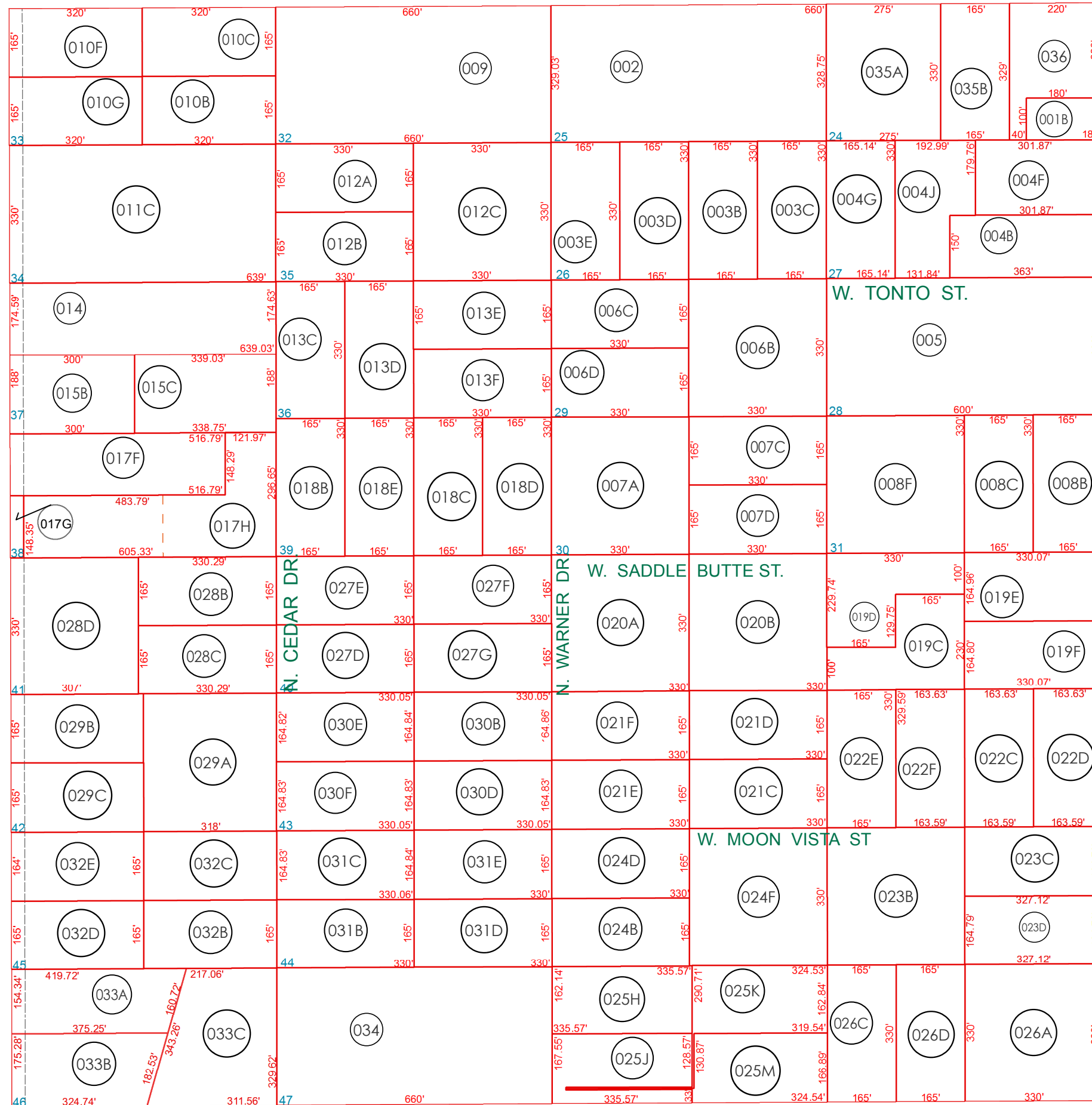


MARICOPA COUNTY

W. McDOWEL BLVD.



SEE MAP 100-13

W. CANYON ST.

MARICOPA COUNTY

N. MERIDIAN RD.

N. DELAWARE DR.

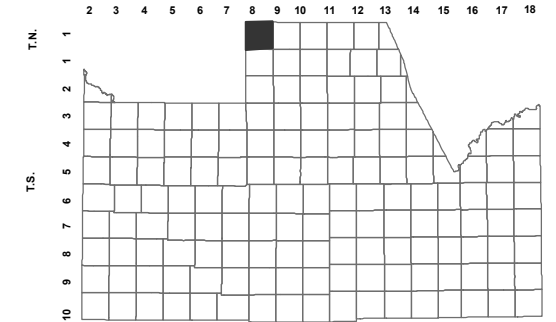
SEE MAP 100-11

BOOK - MAP

100-12

NW SEC. 6 T.01N. R.08E.

LOCATION MAPS  
R.E.



TOWNSHIP  
TONTO NATIONAL FOREST



SECTION  
BASELINE AVE.



Revised: 8/25/2017

By: **TH**



**PINAL COUNTY**

WIDE OPEN OPPORTUNITY

**Pinal County Assessor**

THIS MAP DOES NOT REPRESENT A SURVEY. NO LIABILITY IS ASSUMED FOR THE ACCURACY OF THE DATA DELINEATED HEREIN, EITHER EXPRESSED OR IMPLIED BY PINAL COUNTY OR ITS EMPLOYEES. THIS MAP IS COMPILED FROM OFFICIAL RECORDS, INCLUDING PLATS, SURVEYS, RECORDED DEEDS AND CONTRACTS, AND ONLY CONTAINS INFORMATION REQUIRED FOR THE PINAL COUNTY ASSESSOR'S OFFICE PURPOSES.