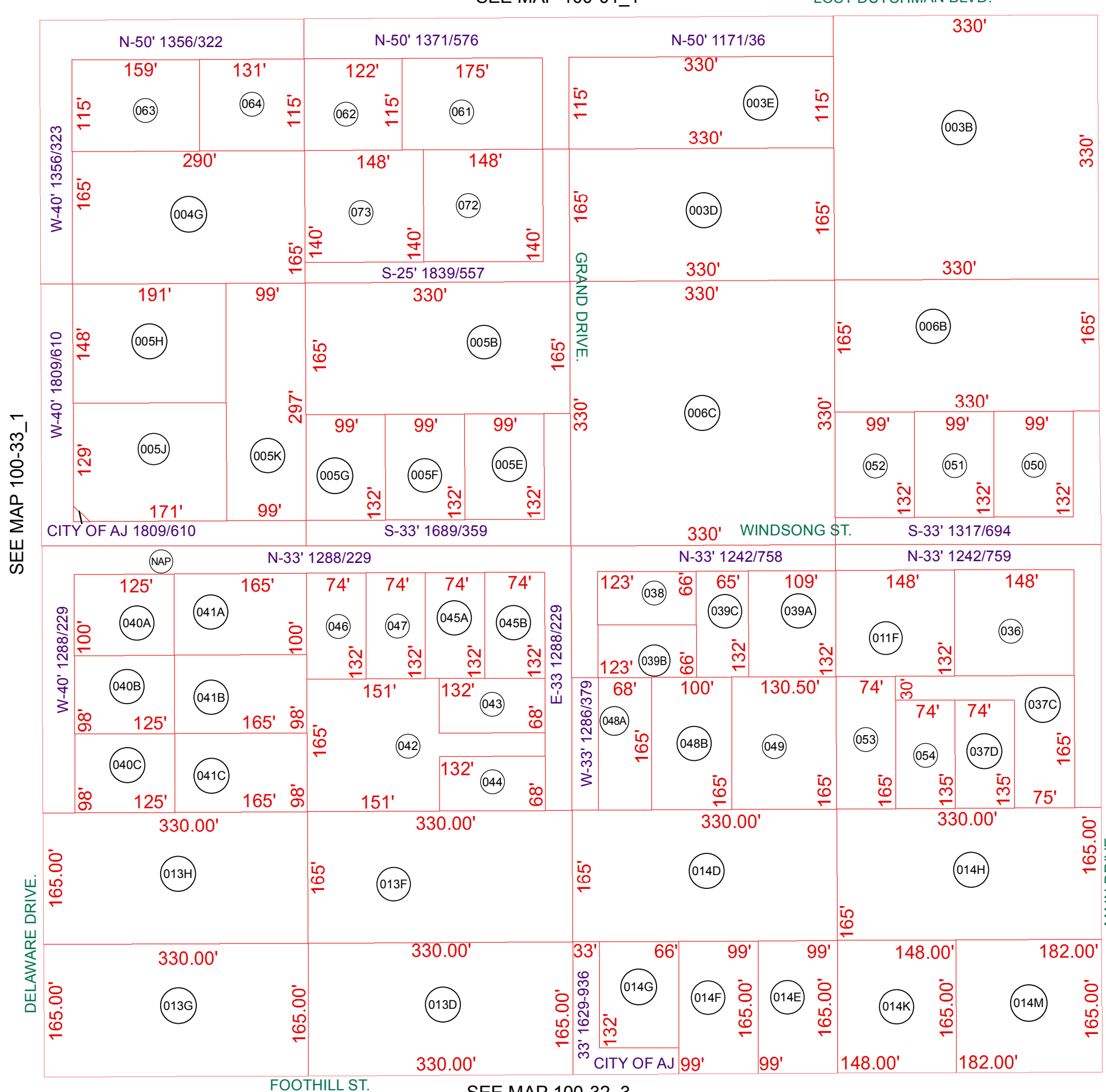


SEE MAP 100-01\_1

LOST DUTCHMAN BLVD.

SEE MAP 100-33\_1

SEE MAP 100-32\_1



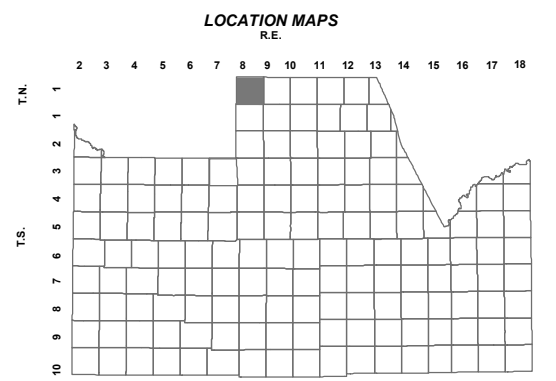
FOOTHILL ST.

SEE MAP 100-32\_3

BOOK - MAP

# 100-32\_2

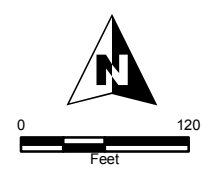
NW NE SEC. 18 T.01N. R.08E.



TOWNSHIP MARICOPA COUNTY

|    |    |    |    |    |    |
|----|----|----|----|----|----|
| 6  | 5  | 4  | 3  | 2  | 1  |
| 7  | 8  | 9  | 10 | 11 | 12 |
| 18 | 17 | 16 | 15 | 14 | 13 |
| 19 | 20 | 21 | 22 | 23 | 24 |
| 30 | 29 | 28 | 27 | 26 | 25 |
| 31 | 32 | 33 | 34 | 35 | 36 |

SECTION



Revised: 6/27/2017

By: **KG**



PINAL COUNTY  
wide open opportunity

**Pinal County Assessor**

THIS MAP DOES NOT REPRESENT A SURVEY. NO LIABILITY IS ASSUMED FOR THE ACCURACY OF THE DATA DELINEATED HEREIN, EITHER EXPRESSED OR IMPLIED BY PINAL COUNTY OR ITS EMPLOYEES. THIS MAP IS COMPILED FROM OFFICIAL RECORDS, INCLUDING PLATS, SURVEYS, RECORDED DEEDS AND CONTRACTS, AND ONLY CONTAINS INFORMATION REQUIRED FOR THE PINAL COUNTY ASSESSOR'S OFFICE PURPOSES.